



HEART OF AMERICA

M E D I C A L C E N T E R

Looking Ahead



April
2024

S	M	T	W	T	F	S
	1	2	3	4	5	6
7	8	9	10	11	12	13
14	15	16	17	18	19	20
21	22	23	24	25	26	27
28	29	30				

Management Meeting

April 17th @11:45 AM

Greatest Needs Gala

April 26th @5:30 PM

Healthcare Week

May 13th-17th

GSHA Regular Board Meeting

May 20th @6:00PM

CPR Course Monthly Schedule

HAMC & Public

Register by
Calling:
701-776-5455
Ext. 2153

ALL CLASSES HELD IN
THE PROFESSIONAL
BUILDING – 3rd FLOOR
CLASSROOM

2nd Tuesday of each month from 8am - 11am

3rd Thursday of each month from 6pm - 9pm



HEART OF AMERICA
MEDICAL CENTER



MAY DAY BASKETS

Order your baskets to be
delivered IN Rugby to a friend,
loved one, or neighbor on
May 1st!

Last day to order is April 25th

Call Terri at 208-1684 to order.



HEART OF AMERICA
AUXILIARY

\$10



6 GUESTS
5 NIGHTS
3-4 BEDROOMS
3-4 BATHROOMS

Paradise Found / Winner's Choice

- Five nights at your choice from three stunning tropical destinations
- Sail to Marietas Islands and indulge in full staff services in **Puerto Vallarta**
- Ride the waves with a private surf lesson in **Costa Rica**
- Enjoy a 4-course gourmet dinner prepared in-villa by a private chef in **St. Martin**
- Premium Guest Services for trip planning
- 24 months to travel

Paradise Found

One of the Live Auction items at the upcoming Greatest Needs Gala!



REQUESTS THE HONOR OF YOUR PRESENCE AT OUR

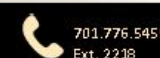
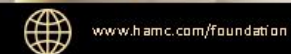
Greatest Needs Gala

APR
FRIDAY 26 AT 5:30 PM
2024

THE RUGBY EAGLES
SOCIAL, DINNER, AUCTION

GET TICKETS. DONATE AUCTION ITEMS.

www.hamc.com/gala
foundation@hamc.com
GSHS Foundation: 701.776.5455 ext. 2218



Tickets available in the Foundation Office – McKayla McKay

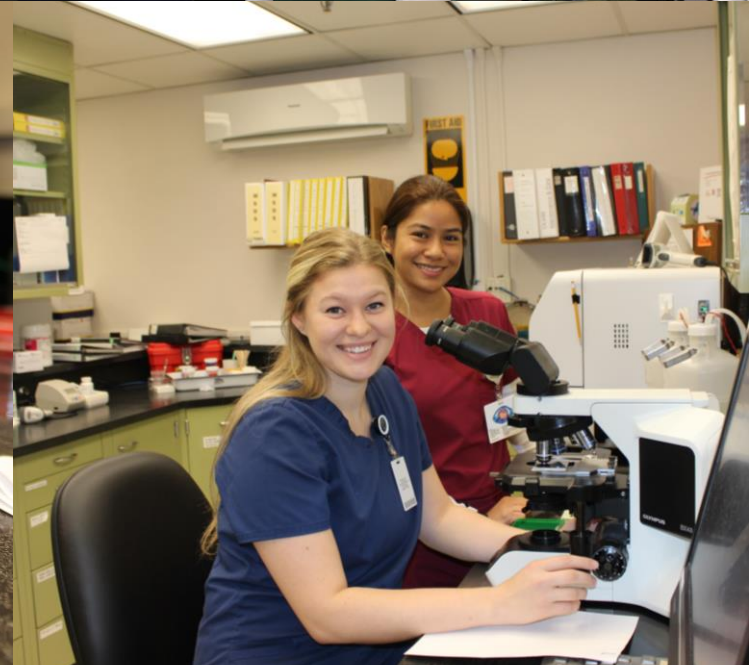
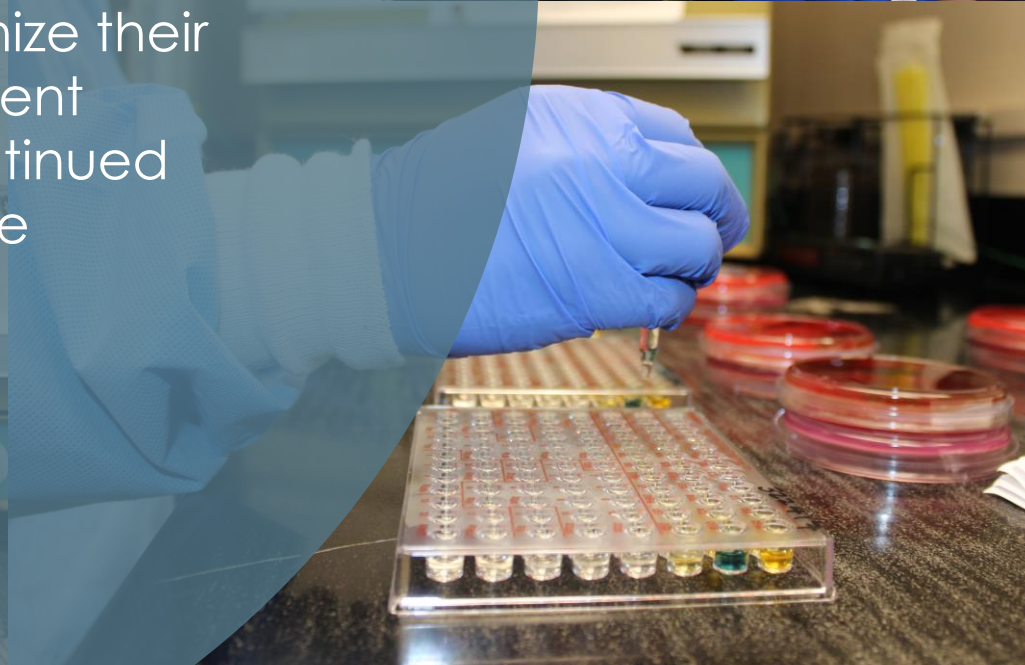
April 14th – 20th

National Medical Laboratory Week

Every day, medical laboratory professionals are working hard behind the scenes of our health system. This week we celebrate our lab professionals and recognize their critical role they have in patient care. Thank you for your continued commitment to caring for the communities we serve.



HEART OF AMERICA
MEDICAL CENTER



LAB WEEK 2024 – Game Table

Winner of each day's games will receive a free lab test of their choice from the following:

- Vitamin D
- PSA (Prostatic Stimulating Hormone)
- CBC (Complete Blood Count)-includes WBC, RBC, Hemoglobin, Platelets
- BMP (Basic Metabolic Panel)-includes Sodium, Potassium, Chloride, CO₂, Creatinine, Glucose, Calcium, BUN
- Lipid Panel-includes Cholesterol, Triglyceride, HDL



National Occupational Therapy Month

In honor of our vital profession and the meaningful differences it makes in the lives of our clients.



HEART OF AMERICA
MEDICAL CENTER

National Cancer Control Month

First goal is to raise awareness, reducing exposure to cancer risk factors, and ensuring that people are provided with the information and support needed to adopt healthy lifestyles. Second goal is early detection of cancer.



HEART OF AMERICA
MEDICAL CENTER



National Volunteer Week

We place spotlight on inspiring figures whose invaluable seeds of kindness through volunteering are bettering the community and our world in general. We celebrate our volunteers at GSHA for all they do for our organization; Thank you! It also challenges us to do better and look for ways to be active participants, joining hands to impact our local communities calling for more support.



April 21st – 27th



National Administrative Professionals' Day - April 24th

We place spotlight on our administrative professionals as they play a crucial role in the success of the organization. They are often the backbone of operations, handling a wide range of tasks and responsibilities that keep things running smoothly. Please recognize and celebrate the dedication, hard work, and invaluable contributions of these individuals that often go unnoticed but are essential to the overall success of the organization – Thank you!



HEART OF AMERICA
MEDICAL CENTER

CELEBRATING THE APRIL EMPLOYEE ANNIVERSARIES

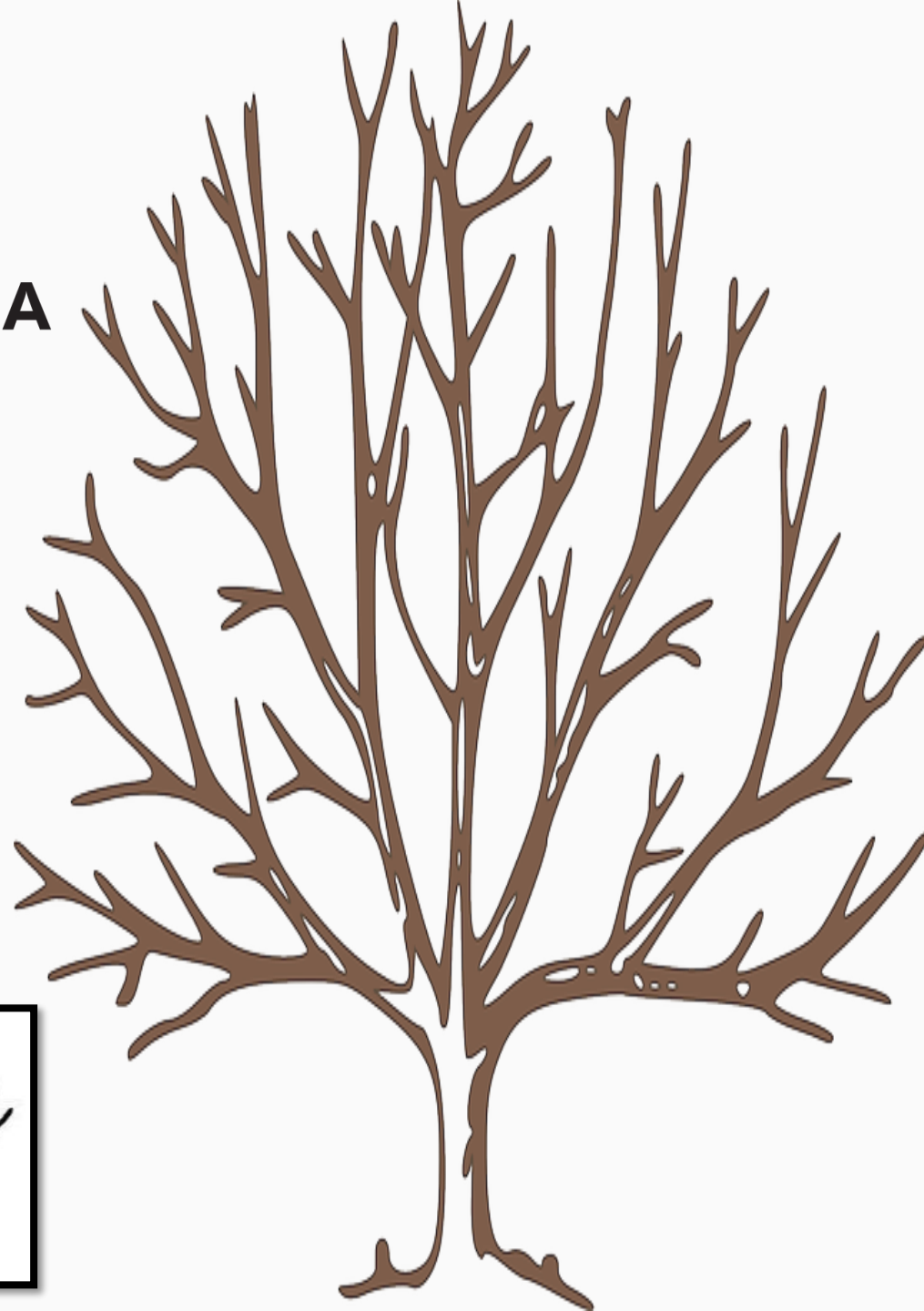


HEART OF AMERICA
MEDICAL CENTER

**Kathy Bogar
Lori Hoffert
Jennifer Roberts
Jeanne Kukla
Cassandra Swanson
Angela Baillie
Melissa Shepard
Corinna Cote
Josie Stone
Deborah Mears
Jay Bosch
Courtney Gladue
Amy Kaylor
Kaylee Schell
Keri Beaver
Chelsey Monroe**



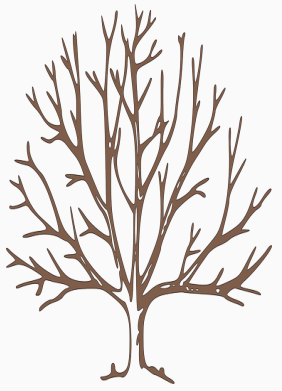
HEART OF AMERICA
MEDICAL CENTER



Unbeleafable
EMPLOYEE

Unbeleafable Nominees

Jeri Schmaltz
Cali Richerson
Vita Walette
Michele Johnson
Jenna Brossart
Tom Solem
Linda Lysne
Robyn Arnold
Brooke Beyer
Tommy Sadler
Kelli Dyck
Holly Schumacker
Kari Burkhartsmeier
Pam Larkins



Holly Schumacker *(Housekeeping)*

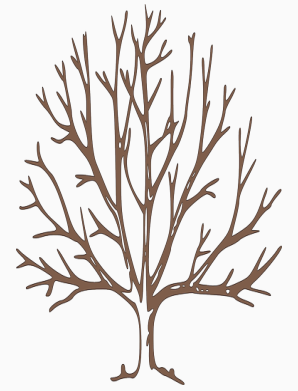
“Holly is such an asset to HAMC! She is hardworking and goes above and beyond her job to make sure the hospital is clean. Keep up the amazing job, Holly! You’re awesome!”



Unbeleafable
EMPLOYEE

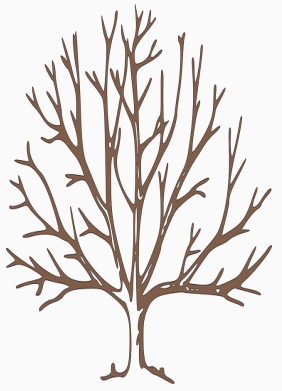


Robyn Arnold *(Care Coordination)*



“Robyn works hard everyday to ensure that the patients at HAMC are well cared for and have the option got an ear to listen to them and their needs. She strives to keep herself educated on the most up to date healthcare. She always has a great attitude towards her patients, coworkers, and the organization. She is always willing to fill any position that is needed to ensure the clinic is working smoothly and the patients are getting the best care possible. She is truly Unbleafable!”

Unbleafable
EMPLOYEE



Michele Johnson *(Dietary)*

“Michele is dedicated to providing high quality food service to our patients and staff. She is hands on, hardworking, and she is laying the foundation for a successfully run department with trained staff to provide excellent service. I am SO thankful she chose HAMC. It has been a huge challenge, and I would like to see her recognized for her efforts.”



Unbeleafable
EMPLOYEE



Build 2024 Otto Bremer Trust

Donations to support the mechanical and apartment structures adjacent to the new hospital are being taken now. These funds will be matched 1:1 by the Otto Bremer Trust up to \$250,000.

If you are interested in donating, the contribution form can be found under the “employee” section of HAMC.com, or the HR office. Please fill out the form and return to the HR office.

Good Samaritan
HEALTH SERVICES
Foundation
Supporting Heart of America Medical Center & Haaland Estates

WELCOME TO HAMC!



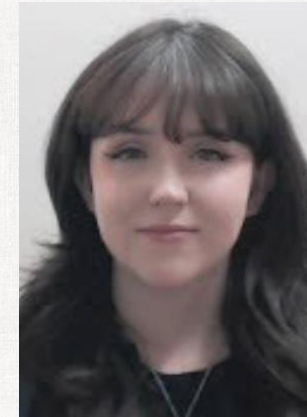
Richard Peltier
Dietary



Tayler Hamilton
Sitter - Hospital



Jessica Evenson
Activities



Stephanie Wright
Dietary



HEART OF AMERICA
MEDICAL CENTER

Congratulations

RHS Graduates of 2024





Congratulations
RHS Graduate

Riley Bonebrake
Hospital Sitter



HEART OF AMERICA
MEDICAL CENTER



Congratulations
RHS Graduate

Hailey Solem
Accounting/HIM



HEART OF AMERICA
MEDICAL CENTER



Congratulations
RHS Graduate

Kaedyn DeMontingny
Hospital Sitter



HEART OF AMERICA
MEDICAL CENTER



Congratulations
RHS Graduate

Haley Mayer
CNA – Care Center



HEART OF AMERICA
MEDICAL CENTER



Congratulations
RHS Graduate

Rylee Geiszler
CNA – Care Center



HEART OF AMERICA
MEDICAL CENTER



Congratulations
RHS Graduate

Trista Hamilton
Daycare Caregiver



HEART OF AMERICA
MEDICAL CENTER

HUMAN RESOURCES NEWS & UPDATES

Stipulations

FT or PT status

- New hire must be at part time or full time status. Part time defined as 48hr/PP.
- Payout will be the pay period after 90 days & 6 months.
 - 50% payment after 90 days
 - 50% payment after 6 months

PRN/Temp status

- New hire must be on a continuous schedule, at least 2 shifts per week.
- Payout will be the pay period after 1 month.
 - 100% after 1 month

- Referring Employee must be actively employed at time of bonus pay out.
- New hire must submit who referred them at time of orientation.
- New hire cannot have corrective actions during this period.
- Referrals of former employees, of less than 1 year of termination, do not qualify .
- Please talk to HR for any further questions.

\$2,000 Bonus – LPN'S & RN's

\$1,000 Bonus – CNA'S, Housekeepers, & Dietary

\$500 Bonus – all other FT/PT Positions



**Refer your friends
to HAMC and earn
some cash!**

Referral Opportunity!



BI-MONTHLY COMPLAINTS BITS

03/14/2024

Compliance in the News

[Former federal agent sentenced to prison for illegal oxycodone distribution, witness tampering and obstructing justice | US DOJ](#)

[Jury Convicts Care Worker of Medicaid Fraud for Claiming Hundreds of Home-Care Hours When Patient was Hospitalized – Attorney General](#)

[UNC Health Chatham Hospital to Pay \\$49,000 for Violating Patient Dumping Statute by Failing to Provide Appropriate Medical Screening Examination | OIGeneral -\(hhs.gov\)](#) A 62-year-old patient who presented to Chatham's ED by EMS. Prior to arrival, EMS called in a report about pt condition to the ED, who stated they did not have a cardiologist available & could not manage the patient. EMS continued the transport to the ED. Upon arrival EMS was met in the ambulance bay by Chatham's nursing employee. An exchange occurred between EMS and nursing employee. EMS left Chatham's ED without pt receiving the EMTALA required medical screening exam

Breaches on the Rise

[Pet retail giant PetSmart is warning some customers their passwords were reset due to an ongoing credential stuffing attack attempting to breach accounts](#)

[Criminals have probably stolen nearly 30,000 Fidelity Investments Life Insurance customers' personal and financial information](#)

[Canada's financial intelligence agency, FINTRAC, has announced pulling its corporate systems offline due to a cyber incident.](#)

SEE
something
SAY
something

Term of the Week

Serious Adverse Event (Sentinel): An untoward, undesirable, and usually unanticipated event that causes death or serious injury, or the risk thereof. It causes hospitalization or prolongation of hospitalization or causes a persistent or significant incapacity or significant incapacity or substantial disruption of the ability to conduct normal life functions.

Employees Questions of the Week

Please Email Laura at lboucher@hamc.com prior to 4pm on Friday, if you have any questions you would like addressed in the next issue of Compliance Bits.

1. To keep Policy Medical more clean and concise, policies be stored under only one department rather than sharing it to multiple department folders?
 - a. The managers and the compliance committee has voted to not circulate/share policies in each others departments.
 - b. This means that employees will find policies (especially the facility wide policies) in other departments folder. The best way to find what you need is to search for the policy.
 - c. Please check out the Policy Medical Instruction folder tab in Policy Medical if needing instructions to policy medical.
2. How do I attest to policies?
 - a. Many questions including how to attest to polies can be found on Policy Medical Under the Heart of America tab and then under Policy Medical Instructions. Please check out instructions under this tab.
 - b. In the month of March there will be a teams meeting (Managers, and an All user one) with a recording done to demonstrate Policy Medical. Please watch for invites soon.
 - c. If you still require help after looking at the instructions and attending (watching video) Teams meeting contact lboucher@hamc.com to schedule a one on one Teams Session.

NEWS & EVENTS



I AM AWESOME
RUGBY Chamber of COMMERCE
VOLUNTEER AWARD

Congratulations!
March 2024

I AM AWESOME
RUGBY Chamber of COMMERCE
CUSTOMER SERVICE AWARD

Congratulations!
February 2024



Do you have someone to
nominate for Volunteer Award
or Customer Service? Call
776-5846 or email you
nomination to
rugbychamber@gondtc.com

Upcoming Events

- April 2: LFS Pre-K and Kindergarten info night
- April 3: Art Talks
- April 3: ND Job Service at Library
- April 3: Lunch and Learn - HOA Library -noon
- April 3: Bingo at Senior Center
- April 3: Great Plains Mobile Food Bank
- April 4: Blood Drive - Main Street Boutique
- April 4: Positive Discipline Class at Ely
- April 5: Story Hour
- April 6: Total Eclipse Activities at HOA library
- April 7: Roughrider Poker Tour
- April 7: Village Arts Back to the Classics
- April 8-10: LFS Registration
- April 8: Senior Citizens meeting 130 pm
- April 9: Kindergarten Registration - Ely
- April 10: Bingo at Senior Center
- April 10: Heart of America Concert Series
- April 10: The Journey Cancer Support Meeting
- April 11: Ely STEM Night
- April 11: Positive Discipline Class at Ely
- April 12: Story Hour
- April 13: Side by Side Fundraiser Run Esmond
- April 13: Calvary Women's Retreat
- April 13: Village Arts Crochet Class
- April 14: Breakfast at Rugby Eagles
- April 16: Kindergarten Registration - Ely
- April 17: Art Talks
- April 17: Bingo at Senior Center
- April 18: Caregiver Support Group
- April 19: Story Hour
- April 23: Finding Purpose in Pain - RHS
- April 23: Kindergarten Registration - Ely
- April 26: GSH Foundation Gala
- April 30: Kindergarten Registration

COOKING CLASSES



2ND LEVEL OF MAIN STREET BOUTIQUE

Upcoming Dates:

THURS, APRIL 11 OR FRIDAY APRIL 12
POLISH THEMED MENU

THURS, APRIL 18
FRENCH THEMED MENU

THURS, MAY 9 OR FRIDAY, MAY 10
THEME - FINE DINING, IN A HURRY!

CLASSES TO BEGIN PROMPTLY AT 6P.M.

\$50/PERSON
TICKETS MUST BE BOUGHT IN ADVANCE.
CLASSES ARE LIMITED SEATING.

CLASSES ARE TAUGHT DEMONSTRATION
STYLE AND INCLUDE FOOD PREPARED.



Enjoy an amazing assortment of fried donuts. Fried cinnamon roll, jelly filled bismarck, chocolate filed magic rings, cream filed long johns and traditional glazed ring donuts Baldy's has so many delicious options. Available for pick-up as early as 8:30am.

pre-order at:
ilovebaldyspizza.com
(855) 478-4979



Do you love to play Bingo??

Rugby Eagles - Weeknights unless special events

Esmond Bar - Every Tuesday night at 730 pm

Balta Bar - Sundays at 3pm

Dakota Farms - Sundays 530 pm

Senior Citizen Center - every Wednesday at 130 pm



Mobile Food Pantry



Scan Here for Full Mobile Calendar or to Volunteer

Wednesday, April 3

Rugby: 3:45-4:30 p.m.
Fairgrounds community building
208 2nd Avenue Northeast



For more info, please contact:
Great Plains Food Bank
info@greatplainsfoodbank.org | 701.232.6219
For SNAP assistance, call: 855.405.0000

2024-2025

KINDERGARTEN REGISTRATION

REGISTER NOW

- Click on the link above. Fill out the online registration form.
- Bring a copy of student's birth certificate and immunization records to the school office.

GEARING UP FOR KINDERGARTEN
 DATES & TIME: 4/9, 4/16, 4/23 & 4/30 FROM 5:30PM - 7:00PM

USDA Forest Service U.S. DEPARTMENT OF AGRICULTURE

Smokey Bear Reading Challenge

Celebrate Smokey Bear's 80th BIRTHDAY

Join Smokey in learning about wildfires and the environment. Read books, take action, and have fun! And remember: only you can prevent wildfires.

March 1 through November 28, 2024.

Ask your Heart of America librarian how to get started or find out more at smokeybear.com.

Read books about wildfire and the environment. Take action, receive prizes, and help Smokey!

Challenge is geared for ages 4 to 10, but all ages are welcome.

The USDA is an equal opportunity provider, employer, and lender.

HEART OF AMERICA LIBRARY

USED BOOK SALE

FREE WILL DONATION PROCEEDS GO TO RUGBY SCHOOLS TO PAY DOWN LUNCH DEBTS OF STUDENTS.

201 3RD ST SW, RUGBY
RUGBYNDLIBRARY.COM

APRIL 2024

West Room



HAMC CAFÉ



The cafeteria is open from: 8:00am – 10:00am (Breakfast)
11:00am -1:00pm (Lunch)

MONDAY 15th

Oatmeal
Scrambled Eggs with Cheese
Ham Patty

Lasagna Soup
Crispy Chicken Oriental Wrap
Seasoned French Fries
Salad Bar

TUESDAY 16th

Cream of Wheat
Scrambled Eggs with Cheese
Sausage Links

Italian Wedding Soup
Chicken Marsala
Rice Pilaf
Sautéed Mixed Vegetables
Salad Bar

WEDNESDAY 17th

Oatmeal
Scrambled Eggs with Cheese
Blueberry French Toast Bake
Bacon

Cheeseburger Soup
Chicken Fried Steak
Mashed Potatoes/Cream
Gravy
Baby Carrots
Salad Bar

THURSDAY 18th

Malt O Meal
Scrambled Eggs with Cheese
Egg and Sausage Bake
Sausage Patty

Hearty Vegetable Soup
Bacon Cheeseburgers
Onion Rings
Salad Bar

FRIDAY 19th

Oatmeal
Scrambled Eggs with Cheese
Sausage Links
Breakfast Sandwich Croissant
(ham, egg, and cheese)

Chicken Tortilla Soup
Polish Sausage on a Bun
Peas and Carrots
Salad Bar